



## 53205 Thrust ball bearings, single direction

- Popular item

### Thrust ball bearings, single direction

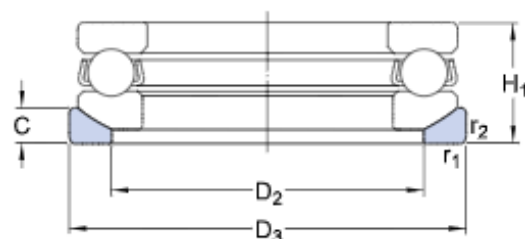
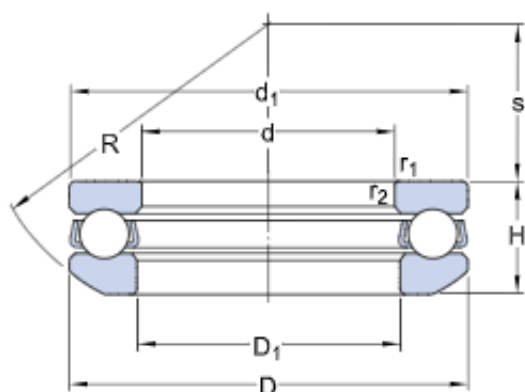
#### Bearing data

[Tolerances,](#)  
table 1

#### Bearing interfaces

[Seat tolerances for standard](#)  
[conditions,](#)  
[Tolerances and resultant fit](#)

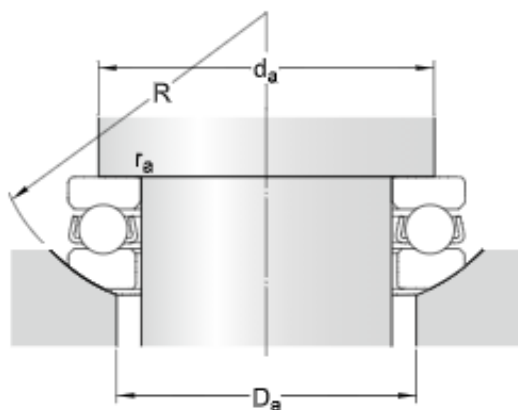
### Technical specification



### DIMENSIONS

d	25 mm	Bore diameter
D	47 mm	Outside diameter
H	16.7 mm	Height
H <sub>1</sub>	19 mm	Height bearing including seat washer
d <sub>1</sub>	≈ 47 mm	Outside diameter shaft washer
D <sub>1</sub>	≈ 27 mm	Inner diameter housing washer
D <sub>2</sub>	36 mm	Inner diameter sphered seat washer
D <sub>3</sub>	50 mm	Outside diameter sphered housing washer
C	5.5 mm	Height sphered housing washer
R	40 mm	Radius sphered housing washer
s	19 mm	Centre height housing washer sphere
r <sub>1,2</sub>	min. 0.6 mm	Chamfer dimension washer

### ABUTMENT DIMENSIONS



$d_a$  min. 38 mm Abutment diameter shaft

$D_a$  max. 36 mm Abutment diameter housing

$r_a$  max. 0.6 mm Fillet radius



## CALCULATION DATA

C	26.5 kN	Basic dynamic load rating
$C_0$	50 kN	Basic static load rating
$P_u$	1.86 kN	Fatigue load limit
	5 000 r/min	Reference speed
	7 000 r/min	Limiting speed
A	0.015	Minimum load factor

## MASS

0.15 kg	Mass bearing (including seat washer where applicable)
---------	---

## ASSOCIATED PRODUCTS